



Wii™

My Sims Party



INSTRUCTION BOOKLET



Party Time!

Your little town is hosting a big party, and everyone's invited! This isn't your typical, stand-around-and-make-idle-chit-chat kind of get-together, either. Your gracious hosts of the community-wide festival have set up a plethora of fun games for the townsfolk to compete in, ranging from sushi-eating contests to giant robot chases ... something for everyone, really. So choose your team and compete for the grand prize: new monuments to help your town grow to greater and more resplendent heights!

Complete Controls

MySims™ Party uses the Wii Remote in many different ways, depending on where your MySim is and what game they're playing.

Your House/Town

Move MySim	+Control Pad
Move cursor	Wii Remote left/right/up/down
Zoom camera	Hold the B Button and up/down on the +Control Pad
Rotate camera	Hold the B Button and press left/right on the +Control Pad
Pause menu	+ Button

You can also move your MySim just by using the Wii Remote. Point the cursor where you want to go, then press and hold the **A** Button to make them move in that direction.

Tip: The further your cursor is from the MySim, the faster they move.

Festival Games

You'll play a wide variety of games at the festivals, and each one is played differently. The festival's host explains each game's control scheme—and the object of the game—before the game begins.

Playing the Game

Are you ready to party? Grab a few friends or go up against MySim teams in a luggage-moving, flower-growing battle royale!

Creating Your MySim

You can either go with a pre-made MySim, or customize one to fit your personal tastes ... or make one that bears a slight resemblance to yourself!

Simply point at your MySim's hair, eyes, mouth, or clothes with the Wii Remote and press the A Button to change each one. Press the +Control Pad to rotate your MySim, or zoom in/out.



Your MySim also has four statuses that determine how fast, strong, hearty, and lucky they are during the festival games (see *Statuses*). You'll have nine points to place into those stats any way you like by selecting the change stats icon.

You can also select the random icon to automatically generate a MySim (you'll still need to place the status points yourself). Either way, when you're happy with your MySim, give them a name using the on-screen keyboard and select the checkmark when you're done.

Saving and Loading

When you start the game for the first time, you are prompted to create a save file. If you don't create a save file, you won't be able to save your progress. Start by naming your town using the on-screen keyboard, and then create a MySim.

To save your game while running around town, press the + Button on the Wii Remote and select SAVE GAME.

To load an existing profile, simply select the save file from the Saved Data screen. Up to four profiles can be saved at a time. You can create a new profile at any time by selecting an empty save slot.

Note: You cannot save progress in the middle of a festival game.

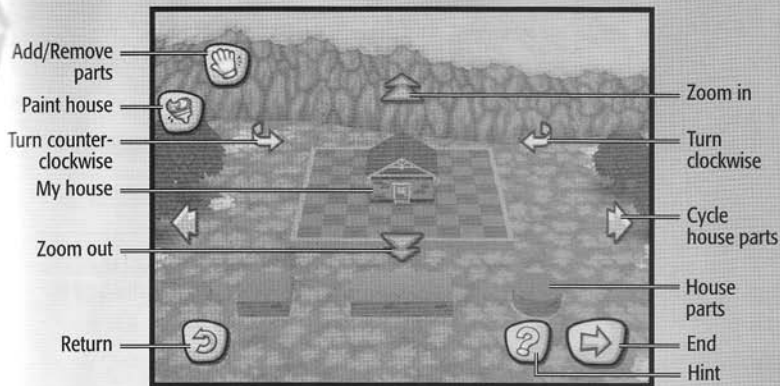
In the Village

You start off in your own home. Head out the front door, have a look around town and talk to the locals.

Editing Your House

If you decide you don't like the look of your house, you can renovate your home from the foundation up, or start completely from scratch.

Point at the part of your house you want to change with the Wii Remote and select it with the **A** Button.



If you're creating a house from scratch, start with a base and build up from there. Don't forget to add a door ... your MySim doesn't want to climb through the window to get in and out of their own home!

Use the arrows to cycle through the house parts; select them with the **A** Button. Then move the part around the house with the **+Control Pad**, and place the part with the **A** Button. Remove parts by selecting them and pressing the **B** Button.

Paint your house by selecting the paint house icon, then highlight the area you want to paint, and press the **A** Button to cycle through the different styles and colors until you find the one you like.